

Alpha Line

English Version



ORTNER
KACHELOFEN MIT SYSTEM

The ORTNER Storage Heater

WARMTH AS IT SHOULD BE: EVEN AND LONG-LASTING.

In our storage heaters the energy of the woodfire is stored in the heavy ceramic mass and gradually released over the oven surface. All solid objects in the room warm up and store the heat. This warmth is given back as radiation to the surroundings. The air circulation in the room is reduced to a minimum and no dust is whirled up. The thermal radiation of an ORTNER storage heater promotes the well-being of body, mind and soul. This leads to a feeling of happiness



EXPERIENCE RAYS OF SUNLIGHT AT HOME.

Did you know that both solar radiation as well as thermal radiation is about infrared rays? An ORTNER storage heater with its thermal radiation has the same effect. With an ORTNER storage heater you strengthen your immune system as well as your well-being. You get the power of the sun in your home.

AN ORTNER STORAGE HEATER ACTIVATES ALL SENSES.

It starts with the feeling of touching the wood. It continues with the incomparable fragrance, which the wood is spreading, and the crackle that is heard when it is lit. The highlight is the sight of the fire in your own home. These sensory perceptions are nothing to replace, not to describe otherwise. And finally you ask yourself: how have I lasted without an ORTNER storage heater for so long?



The Alpha Line

A STORAGE HEATER FOR EVERY HOME

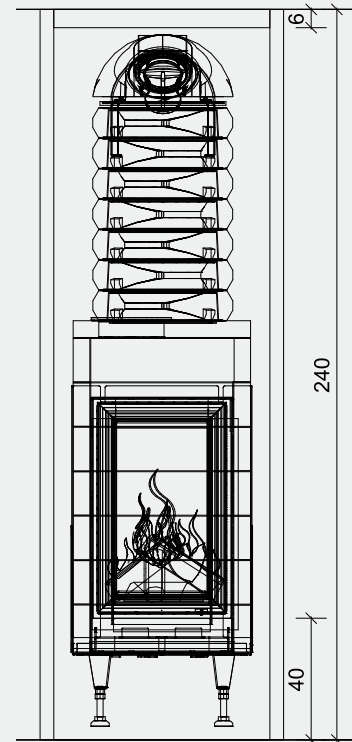
The storage heaters of the „ORTNER Alpha Line“ range are preconfigured, fully calculated and complete sets. All components for building an ORTNER storage heater are grouped together under one article number.

Out of the existing ORTNER product range we selected the most popular stove models and window sizes to create a new storage heater line with 55 different models and 220 different design options.

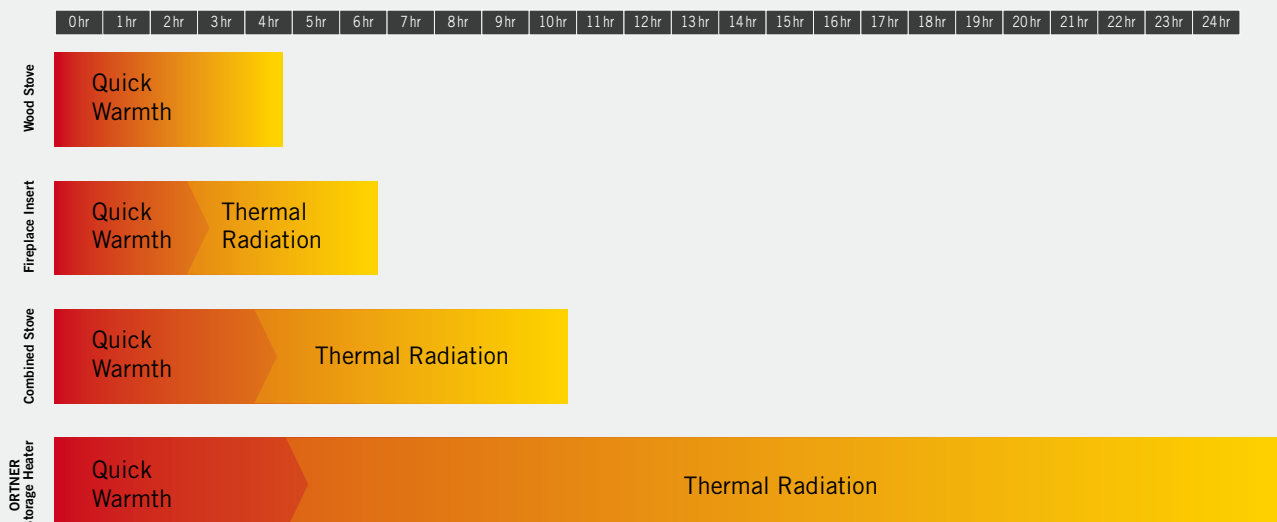
The design of the ORTNER Alpha Line captivates with a minimalistic design language. Previously decorated with glazed tiles and named „Kachelofen“ (tiled stove), in recent years the storage heater impresses with reduced design that clearly focuses on the flames of wood fire in the stove.

All front and corner versions can be placed in three different variations: on the wall, as a room divider or in the corner. Storage tunnel models can be placed free in the room or with the Short Side to the wall as a room divider.

Storage fronts are named after famous Austrian ski resorts (Schladming, Saalbach, Lech ...). Corner models bear the names of well known Austrian mountain peaks (Schneeberg, Dachstein, Kitzsteinhorn ...). Storage tunnels have, due to the double door opening, the names of street tunnels in the alpine region (Plabutsch, Arlberg, Katschberg ...).



DURATION OF THE HEAT STORAGE EFFECT WITH ONLY ONE HEATING



Scope of Delivery

The Alpha Line

Included in the Scope of Delivery

With only one article number you can order all components for a complete ORTNER storage heater. Depending on the customer preference, the set can be mounted on the wall, as a room divider or in the corner. You can find further recommended accessories, for example the ORTNER combustion control (ABS), on page 54.



ORTNER Storage Heater (incl. Blind Frame) and high performance storage

Storage heater and high performance storage together form the core of the stove - the ORTNER Inside. Depending on the Alpha Line model, the storage heater is combined with KAM (Ceramic Attachment Module) or KMS (Ceramic Module Storage System). Selected raw materials and unique manufacturing processes guarantee the high efficiency of our storage materials. The stove door is hinged left by default. Change requests can be announced when ordering.



Base Plate (Grundofenbauplatte®)

The base plate is characterised by a particularly high density and plate thickness. It is especially suitable for new construction, even more efficient for heat storage, and thus ensures a heat output for up to 24 h.

Glass fibre fabric, Glass fibre angle 90° and Fully flexible aluminium pipe

The Glass fibre fabric is suitable for plaster construction with Hafnermeister. Advantage: Very small proportion of finishing. Glass fibre angles provide optimum reinforcement at the corners. The aluminium pipe is fully flexible in all directions and extendible up to 3 m.





Bedding mortar HK

The Bedding mortar HK is a hydraulic, as well as ceramic curing bedding mortar and recommended for the construction of ORTNER storage heaters.

Bonding mortar

Hydraulic rapidly curing, Grey adhesive and bedding mortar. Suitable for the processing of ceramic and chamotte products and casing construction material, for the bonding, sealing, levelling and filling.



Hafnermeister

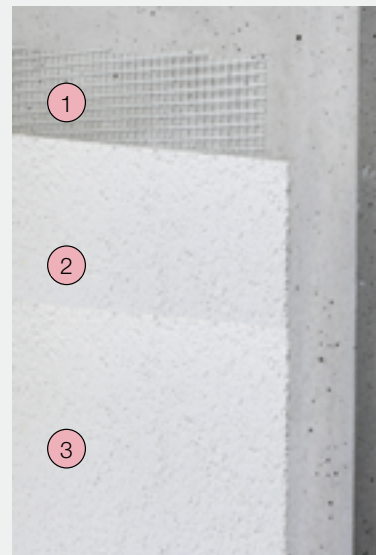
Hydraulically curing, naturally white reinforcement and plaster mortar. As a white reinforcement and plaster mortar for the application of the fabric, as a foundation for all ORTNER plaster and filler compounds as well as for the preparation of the completed surface.

Plaster construction with ORTNER Hafnermeister

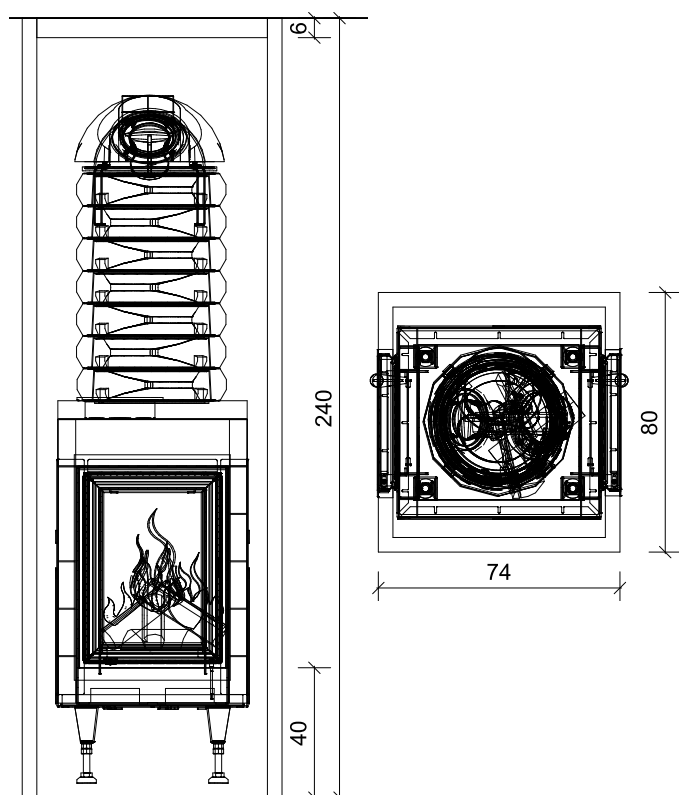
1 Glass fibre fabric

2 Hafnermeister

3 Hafnermeister



Gleinalm 8 kg



CONSTRUCTION DATA

min./max. Wood quantity	5,5 / 8 kg
min./max. nominal Heating Capacity	1,5 / 2,1 kW
total Storage Mass	1.610 kg
total max. Surface	ca. 7,4 m²
Chimney	Ø 180 mm
min. effective Height	3,5 m
Combustion air connection	Ø 150 mm

REQUIRED ISOBOARD INSULATION (1605001)

Short Side	5 Pcs.
Long Side	– Pcs.
Corner	– Pcs.

RECOMMENDED ACCESSORIES

Alpha Line ABS – Ø 150 mm	1607502
30 cm Shell Plus – Column, U 3200 mm	1607400

Art. no.	Designation	Description
1607045	ST11-42/59_Column - Gleinalm 8 kg	Storage Tunnel Set - Column, for wall, centred in the room: KAM-Set, storage heater, blind frame 4S-90°, Bedding mortar HK, sealing strip, starter box, Base plate, Fully flexible aluminium pipe, Bonding mortar, Hafnermeister, Glass fibre fabric 25 m², Glass fibre angle 90°

Bosruck 8 kg**CONSTRUCTION DATA**

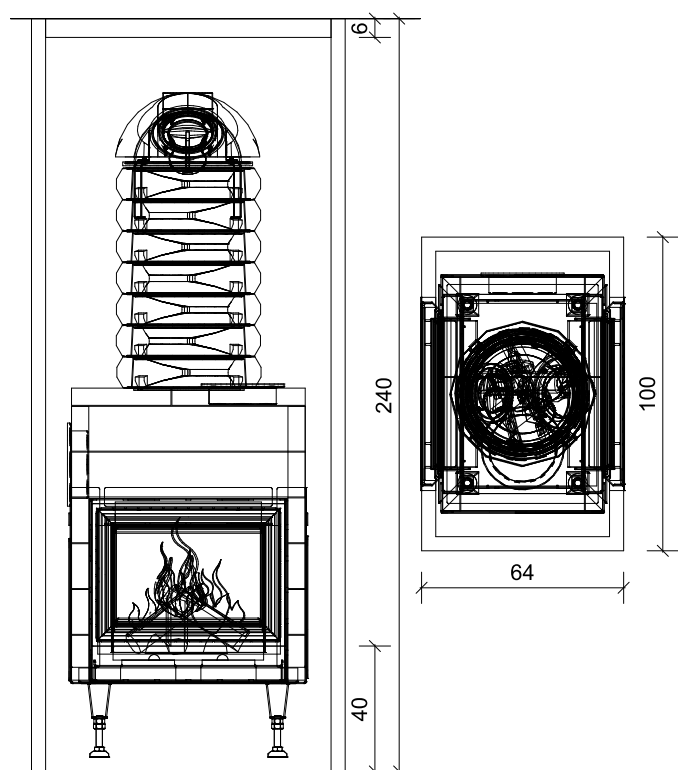
min./max. Wood quantity	6 / 8 kg
min./max. nominal Heating Capacity	1,6 / 2,1 kW
total Storage Mass	1.690 kg
total max. Surface	ca. 7,9 m²
Chimney	Ø 180 mm
min. effective Height	3,5 m
Combustion air connection	Ø 150 mm

REQUIRED ISOBOARD INSULATION (1605001)

Short Side	5 Pcs.
Long Side	– Pcs.
Corner	– Pcs.

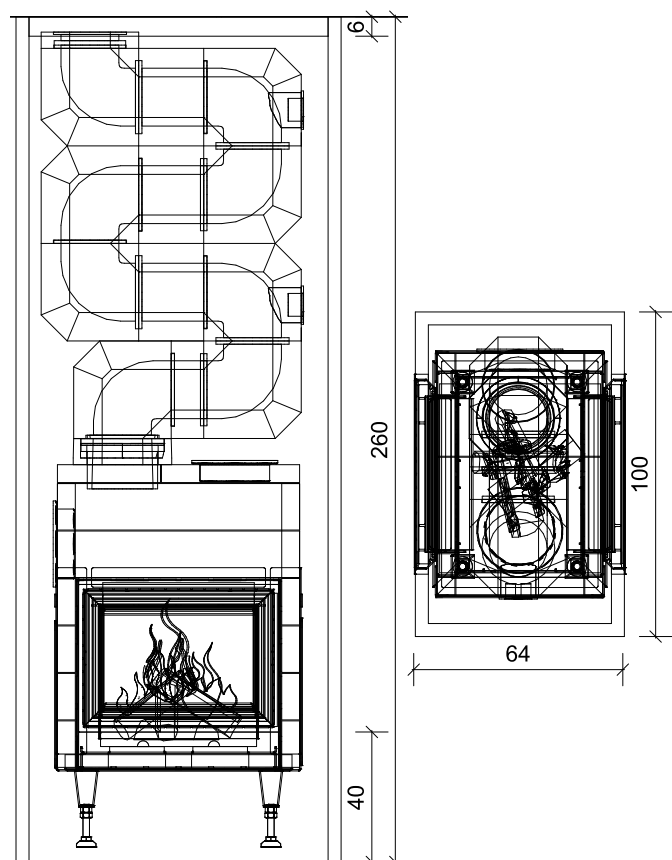
RECOMMENDED ACCESSORIES

Alpha Line ABS – Ø 150 mm	1607502
30 cm Shell Plus – Column, U 3400 mm	1607401



Art. no.	Designation	Description
1607047	ST12-59/42_Column - Bosruck 8 kg	Storage Tunnel Set - Column, for wall, centred in the room: KAM-Set, storage heater, blind frame 4S-90°, Bedding mortar HK, sealing strip, starter box, Base plate, Fully flexible aluminium pipe, Bonding mortar, Hafnermeister, Glass fibre fabric 25 m², Glass fibre angle 90°

Bosruck 12 kg



CONSTRUCTION DATA

min./max. Wood quantity	6 / 12 kg
min./max. nominal Heating Capacity	1,6 / 3,2 kW
total Storage Mass	2.000 kg
total max. Surface	ca. 8,5 m²
Chimney	Ø 180 mm
min. effective Height	3,5 m
Combustion air connection	Ø 180 mm

REQUIRED ISOBOARD INSULATION (1605001)

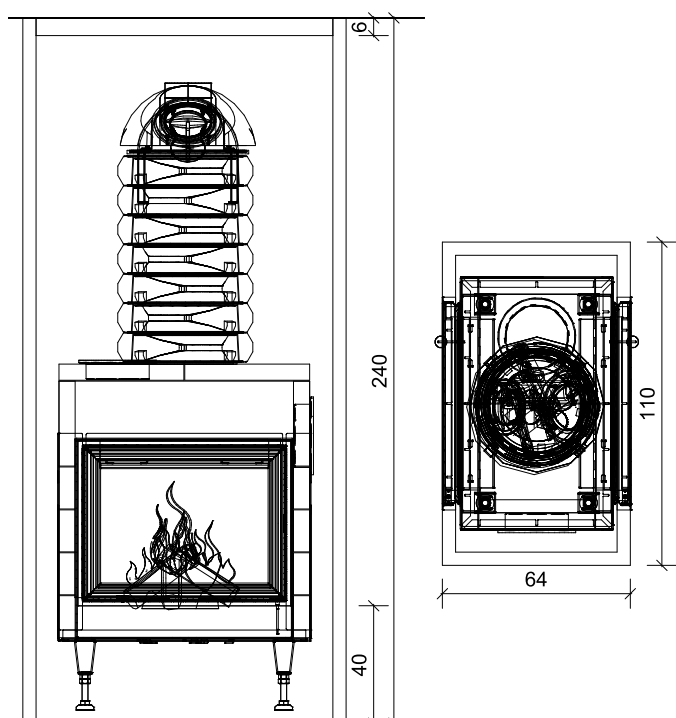
Short Side	6 Pcs.
Long Side	– Pcs.
Corner	– Pcs.

RECOMMENDED ACCESSORIES

Alpha Line ABS – Ø 180 mm	1607503
30 cm Shell Plus – Column, U 3400 mm	1607401
Alpha Line KMS 300 Pipe	1607520

Art. no.	Designation	Description
1607048	ST12-59/42_Column - Bosruck 12 kg	Storage Tunnel Set - Column, for wall, centred in the room: KMS, storage heater, blind frame 4S-90°, Bedding mortar HK, sealing strip, starter box, Base plate, Fully flexible aluminium pipe, Bonding mortar, Hafnermeister, Glass fibre fabric 25 m², Glass fibre angle 90°

Katschberg 8 kg



CONSTRUCTION DATA

min./max. Wood quantity	6 / 8 kg
min./max. nominal Heating Capacity	1,6 / 2,1 kW
total Storage Mass	1.750 kg
total max. Surface	ca. 8,4 m²
Chimney	Ø 180 mm
min. effective Height	3,6 m
Combustion air connection	Ø 150 mm

REQUIRED ISOBOARD INSULATION (1605001)

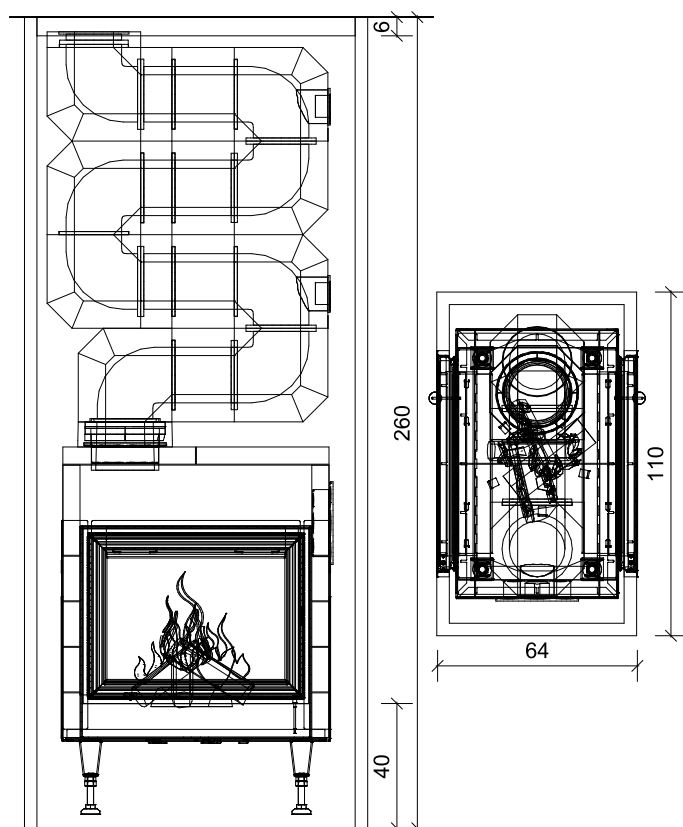
Short Side	5 Pcs.
Long Side	– Pcs.
Corner	– Pcs.

RECOMMENDED ACCESSORIES

Alpha Line ABS – Ø 150 mm	1607502
30 cm Shell Plus – Column, U 3600 mm	1607402

Art. no.	Designation	Description
1607051	ST13-69/53_Column - Katschberg 8 kg	Storage Tunnel Set - Column, for wall, centred in the room: KAM-Set, storage heater, blind frame 4S-90°, Bedding mortar HK, sealing strip, starter box, Base plate, Fully flexible aluminium pipe, Bonding mortar, Hafnermeister, Glass fibre fabric 25 m², Glass fibre angle 90°

Katschberg 13 kg



CONSTRUCTION DATA

min./max. Wood quantity	6,5 / 13 kg
min./max. nominal Heating Capacity	1,7 / 3,5 kW
total Storage Mass	2.160 kg
total max. Surface	ca. 9 m ²
Chimney	Ø 180 mm
min. effective Height	3,6 m
Combustion air connection	Ø 180 mm

REQUIRED ISOBOARD INSULATION (1605001)

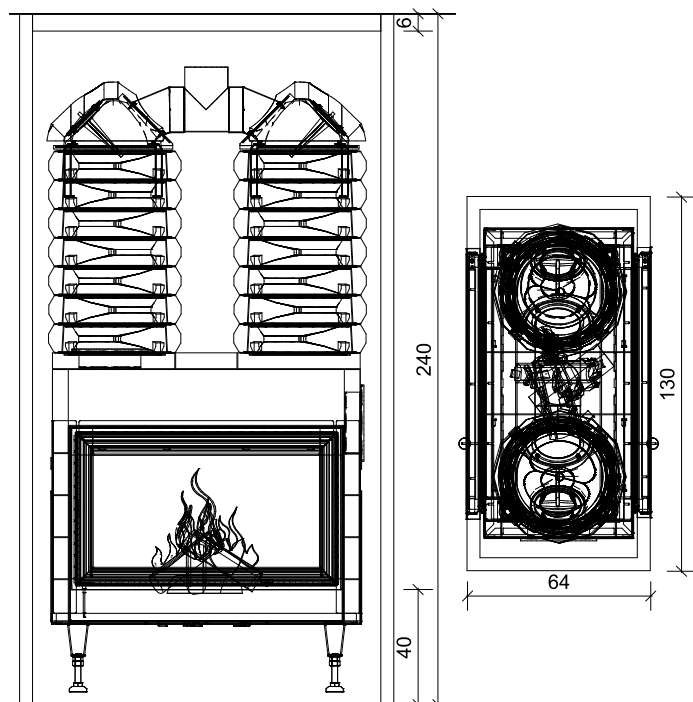
Short Side	6 Pcs.
Long Side	– Pcs.
Corner	– Pcs.

RECOMMENDED ACCESSORIES

Alpha Line ABS – Ø 180 mm	1607503
30 cm Shell Plus – Column, U 3600 mm	1607402
Alpha Line KMS 300 Pipe	1607520

Art. no.	Designation	Description
1607052	ST13-69/53_Column - Katschberg 13 kg	Storage Tunnel Set - Column, for wall, centred in the room: KMS, storage heater, blind frame 4S-90°, Bedding mortar HK, sealing strip, starter box, Base plate, Fully flexible aluminium pipe, Bonding mortar, Hafnermeister, Glass fibre fabric 25 m ² , Glass fibre angle 90°

Arlberg 8 kg



CONSTRUCTION DATA

min./max. Wood quantity	6 / 8 kg
min./max. nominal Heating Capacity	1,6 / 2,1 kW
total Storage Mass	2.100 kg
total max. Surface	ca. 9,3 m²
Chimney	Ø 180 mm
min. effective Height	3,8 m
Combustion air connection	Ø 150 mm

REQUIRED ISOBOARD INSULATION (1605001)

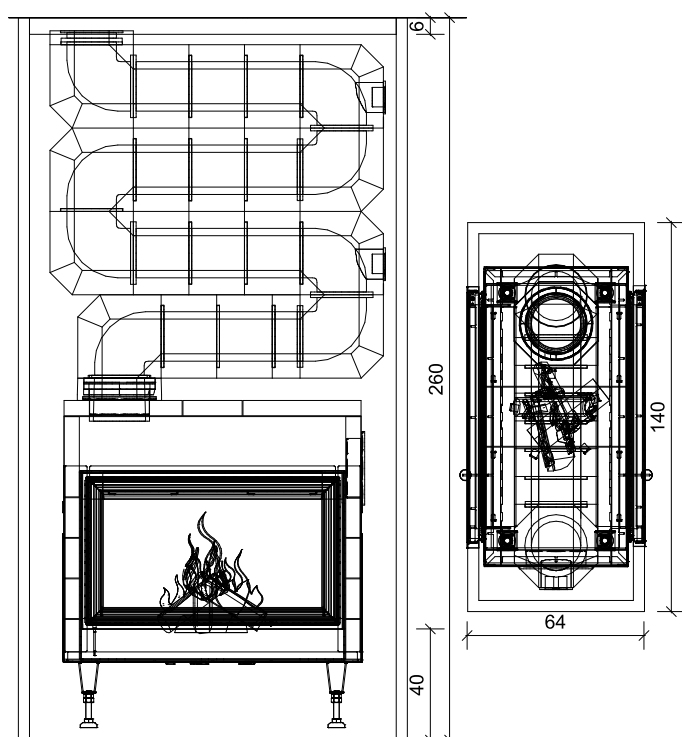
Short Side	5 Pcs.
Long Side	– Pcs.
Corner	– Pcs.

RECOMMENDED ACCESSORIES

Alpha Line ABS – Ø 150 mm	1607502
30 cm Shell Plus – Column, U 4000 mm	1607403

Art. no.	Designation	Description
1607055	ST18-91/53_Column - Arlberg 8 kg	Storage Tunnel Set - Column, for wall, centred in the room: KAM-Set, storage heater, blind frame 4S-90°, Bedding mortar HK, sealing strip, starter box, Base plate, Fully flexible aluminium pipe, Bonding mortar, Hafnermeister, Glass fibre fabric 25 m², Glass fibre angle 90°

Arlberg 18 kg



CONSTRUCTION DATA

min./max. Wood quantity	9 / 18 kg
min./max. nominal Heating Capacity	2,4 / 4,8 kW
total Storage Mass	2.560 kg
total max. Surface	ca. 10,6 m ²
Chimney	Ø 180 mm
min. effective Height	3,8 m
Combustion air connection	Ø 180 mm

REQUIRED ISOBOARD INSULATION (1605001)

Short Side	6 Pcs.
Long Side	– Pcs.
Corner	– Pcs.

RECOMMENDED ACCESSORIES

Alpha Line ABS – Ø 180 mm	1607503
30 cm Shell Plus – Column, U 4200 mm	1607404
Alpha Line KMS 300 Pipe	1607520

Art. no.	Designation	Description
1607056	ST18-91/53_Column - Arlberg 18 kg	Storage Tunnel Set - Column, for wall, centred in the room: KMS, storage heater, blind frame 4S-90°, Bedding mortar HK, sealing strip, starter box, Base plate, Fully flexible aluminium pipe, Bonding mortar, Hafnermeister, Glass fibre fabric 25 m ² , Glass fibre angle 90°